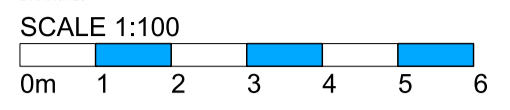


THIS DRAWING IS PROTECTED BY COPYRIGHT AND MUST NOT BE COPIED OR REPRODUCED WITHOUT THE WRITTEN CONSENT OF RGP PARTNERSHIP LIMITED. NO DIMENSIONS ARE TO BE SCALED FROM THIS DRAWING. ALL DIMENSIONS AND TIES TO BE CHECKED ON SITE. NORTH POINTS SHOWN ARE INDICATIVE. E

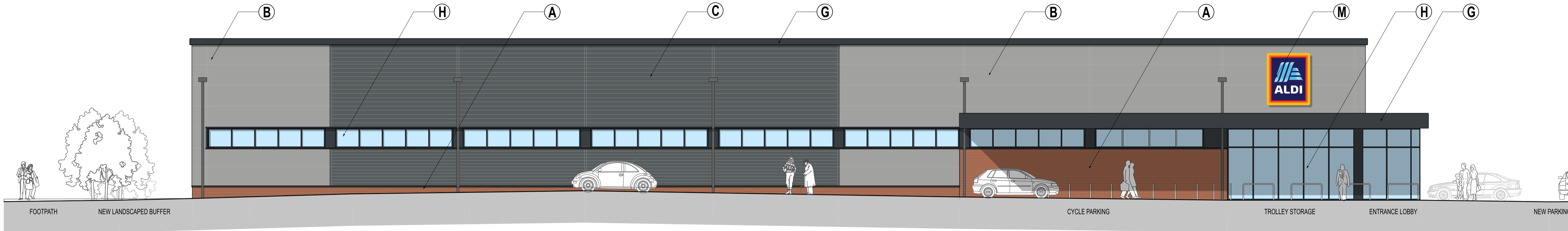
SITE SPECIFIC HAZARDS
 IN ACCORDANCE WITH THE REQUIREMENTS OF THE REGULATIONS 2015 THE FOLLOWING SIGNIFICANT RESIDUAL HAZARDS HAVE NOT BEEN DESIGNATED OUT OF THE PROJECT AND MUST BE TAKEN INTO CONSIDERATION BY CONTRACTORS PLANNING TO UNDERTAKE THE WORKS SHOWN ON THIS DRAWING



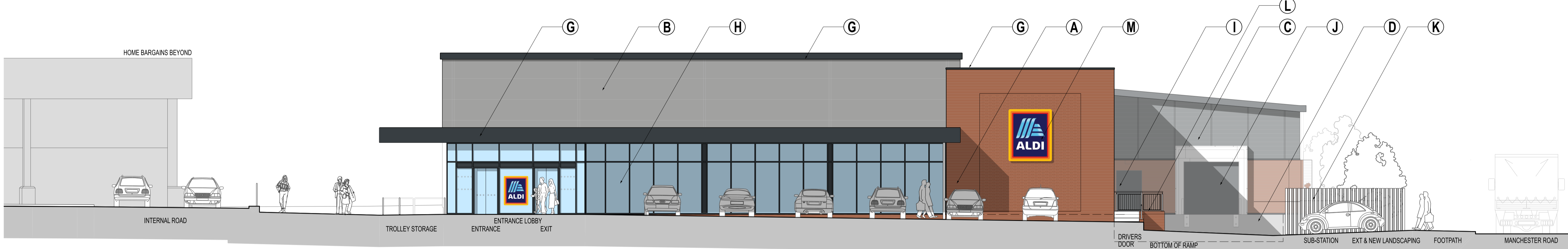
MATERIALS

- (A) FACING BRICKWORK
COLOUR: RED
- (B) MICRO-RIB METAL FACED WALL CLADDING
COLOUR: SILVER RAL 9006
- (C) HORIZONTAL TIMBER CLADDING
IN SIBERIAN LARCH
- (D) CONCRETE DOCK / RAMP WALL
COLOUR: LIGHT GREY (NATURAL)
- (E) METAL ROOF CLADDING
COLOUR: GOOSEWINGS GREY
- (F) FLAT ROOF
COLOUR: MID GREY
- (G) PPC ALUMINIUM TRIMS, FLASHINGS & RAINWATER
COLOUR: ANTHRACITE RAL 7016
- (H) ALUMINIUM CURTAIN WALLING / WINDOWS
COLOUR: ANTHRACITE RAL 7016
- (I) STEEL SECURITY DOORSETS
COLOUR: ANTHRACITE RAL 7016
- (J) INSULATED SECTIONAL OVERHEAD DOOR
COLOUR: ANTHRACITE RAL 7016
- (K) TIMBER HIT AND MISS FENCE PANEL / SCREEN
- (L) HANDRAIL / EDGE PROTECTION / EXT. STEPS
- (M) INDICATIVE SIGNAGE
(SUBJECT TO SEPERATE APPLICATION)

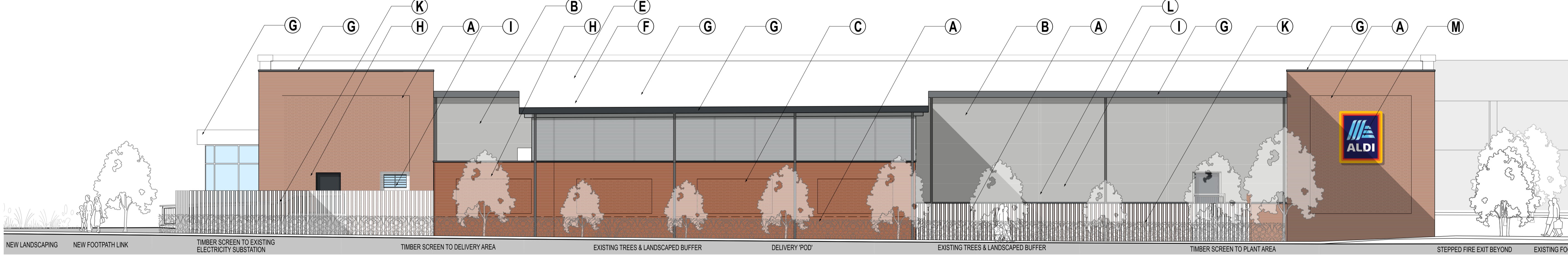
LANDSCAPING SHOWN IS INDICATIVE ONLY. REFER TO LANDSCAPE ARCHITECTS DETAILS FOR FULL INFORMATION.



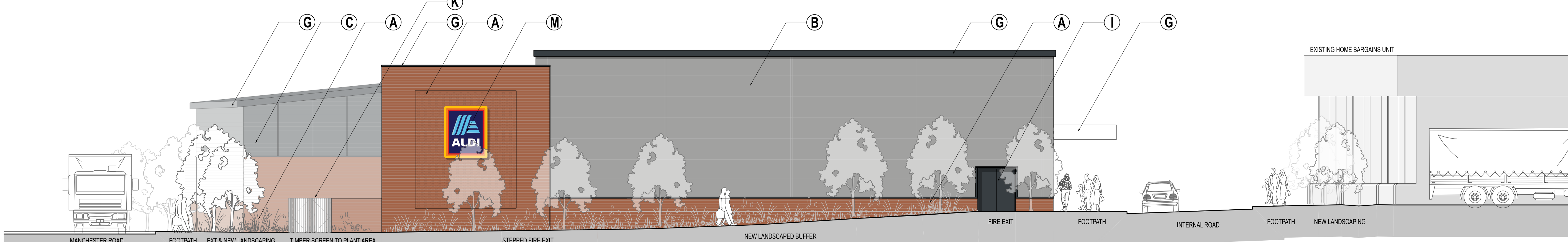
SOUTH EAST ELEVATION
 FACING HOME BARGAINS



NORTH EAST ELEVATION
 FACING DREAMS



NORTH WEST ELEVATION
 FACING MANCHESTER ROAD



SOUTH WEST ELEVATION
 FACING SNIPE WAY

REV.	DATE	NOTES	INT.
REV.E	25.08.21	UPDATED PLANT COMPOUND LAYOUT, MANCHESTER ROAD ELEVATION AND ADDED PROJECTING WALL	AAS
REV.D	15.01.21	SW ELEV ADJUSTED, NW ELEV WINDOWS & FE ADJUSTED, NE ELEV STEPS & BALUSTRADE ADJUSTED	AJP
REV.C	22.12.20	ROOF & BRICK PANEL TO NW ELEV UPDATED, RIBBON GLAZING TO BE ELEV UPDATED	AJP
REV.B	21.12.20	WINDOWS & DOOR, BRICK PANELS TO NW ELEV UPDATED, RWPS INDICATED TO SEE ELEV	AJP
REV.A	17.12.20	UPDATED TO SUIT PLAN, RWPS INDICATED, SIGNAGE UPDATED	AJP

CLIENT / PROJECT
 ST. JAMES PLACE UK PLC.
 PROPOSED FOODSTORE
 PROP. UNIT 13, SNIPE RETAIL PARK, SNIPE WAY
 AUDENSHAW, ASHTON-UNDER-LYNE, OL7 0DN

DRAWING TITLE
PROPOSED ELEVATIONS

STATUS		PLANNING	
DATE	20.11.20	DRAWN	AJP
PROJECT NUMBER	11552	SCALE @ A1	1:100
DRAWING NO.	13	PL	E01

THE RATCLIFFE GROVES PARTNERSHIP
 MANCHESTER
 19 REDFORD ROAD
 LONDON W12 7JK
 T. 020 7600 6666 E. london@rgp.com

