

0 25 50m

# Proposed Site Plan

1 : 250



## Surface Finishes

- M1 Carriageway and Parking spaces. Hot Rolled Asphalt
- M2 Road features. Marshalls Keyblok (80mm) set flush with road.
- M3 Pavement and service strip. Marshalls Keyblok (80mm) with Marshalls concrete kerb.
- M4 Drives. Marshalls Keyblok Block (60mm) paving to front gardens
- M5 Patios. Concrete paving slabs to rear patios
- M6 Access and ramp to Watercourse. Grasscrete.
- M7 Deck. Timber decking to rear garden

## Boundary Treatments

Refer to dwg 169/128 for full details.

## Soft Landscaping

- T1 Semi Mature trees to front gardens and avenue.
- S1 Shrubs to garden areas and around car parking spaces.

Refer to Trevor Bridge Associates dwg 5565.01 for full details.

## House Types

Refer to dwgs 169/220-225 for house type plans and elevations.

**Notes**  
 The Contractor is responsible for checking dimensions, tolerances and references. Verify any discrepancies with the architect before proceeding with the work. Where an item is covered by drawings of different scales the larger scale drawing is to be worked to.  
 Construct to figured dimensions only

Date	Rev.	Revision/ Author/ Checker
03.07.19	AA	Updated to reflect design development. Reissued for planning. JNBP
06.07.19	AB	Updated following client comments. Reissued for planning. JNBP
05.02.19	AC	Notes updated. Reissued for planning. JNBP

**Poulter Architects**

Suite 20  
61 St Petersgate  
Stockport  
SK1 1DH

T. 07792 116373  
E. info@poulterarchitects.co.uk  
W. www.poulterarchitects.co.uk

---

**Purpose of Issue**  
Planning

---

**Project**  
Slateacre Road

---

**Drawing**  
Proposed Site Plan

---

**Date** 02/01/17

---

**Drawn by** JNBP

---

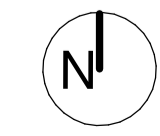
**Checked by**

---

**Scale** 1 : 250 @A1  
1 : 500 @A3

---

**Drawing No** 169/120 **Rev** AC



05/07/2019 11:47:25