
Domestic Abuse in Tameside

Peer Review and Next Steps
Integrated Care & Wellbeing Scrutiny Panel

James Mallion
Public Health Consultant

Domestic Abuse

“Any incident or pattern of incidents of controlling, coercive or threatening behaviour, violence or abuse between those aged 16 or over who are or have been intimate partners or family members regardless of gender or sexuality. This can encompass but is not limited to the following types of abuse: psychological; physical; sexual; financial; and emotional.”

Domestic Abuse Facts

- Women are much more likely than men to be the victims of high risk or severe domestic abuse
- Seven women a month are killed by a current or former partner in England and Wales
- 62% of children living with domestic abuse are directly harmed by the perpetrator

Domestic Abuse Trends In Tameside.....

- Number of DA cases stable
- High & Medium cases increasing
- Inc in Child Soc Care DA refs
- Inc in Bridges repeat referrals
- Reduction in DA reporting from BME;
LGBT; disabled groups



Making the Case - Costs of Domestic Abuse:



Physical and Mental Health - £6.7m



Criminal Justice - £4.9m



Housing and Refuges - £0.8m



Lost Economic Output - £7.5m



Social Services - £1.1m



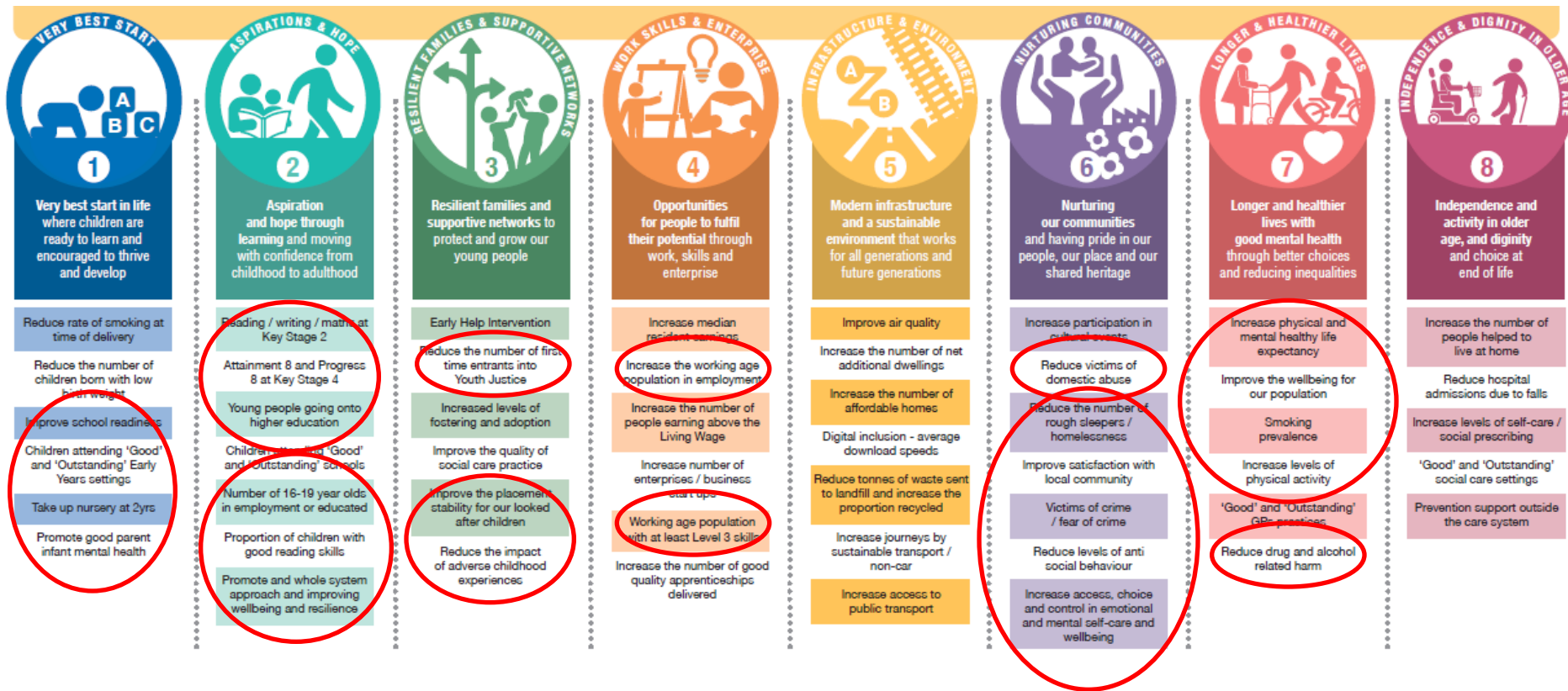
Housing and Refuges - £0.8m



Total Costs - £22.3m

Home Office est = £250m pa. in Tameside

Making the Case - Corporate Plan:



Peer Review

- Independent colleague from London
- Conducted during July 2019
 - Desktop review – what we are currently doing
 - Over 30 front line staff and strategic leaders interviewed
- Focus on strengths, challenges, gaps & recommendations
- Positive engagement from all involved

Strengths

- Lots of good practice, particularly around victim support
 - Good processes in MARAC and MASH
 - Operation Encompass
 - Campaigns with high visibility
 - Wide remit of Women & Families Centre and Bridges outreach service
 - New Relationships & Sex Education curriculum in schools

I have **NO CONTROL** over
my money
who I see
what I do
where I go

I can **TAKE CONTROL**
and **GET HELP**

Domestic abuse is violent, controlling, intimidating and
isolating behaviour which can include financial and
emotional abuse.

**THIS IS ILLEGAL AND THERE'S HELP
AVAILABLE.**

Call 07792 957812 or 0800 3280967
www.tameside.gov.uk/domesticabuse

معاملات پر قابو پائیں۔ ٹےیک کنٹرول | پدمکھپ نینا۔

#TAKECONTROL

NHS

Key Priorities

New strategy and approach:

- 20 year generational approach to **prevent** domestic abuse

Recent work highlighted 4 key priorities:

- Preventing Domestic Abuse
- Continuing to support victims/survivors
- Holding perpetrators to account
- Support a co-ordinated community response



Next Steps

- Strategic Task & Finish Group
- New strategy with longer term vision
- Making a case for investment
- Addressing current gaps (prevention & perpetrators)
- Moving to co-ordinated community response (co-production & workshops)

Discussion

- A view from elected members?
- Are these issues that you see in your communities?

james.mallion@tameside.gov.uk