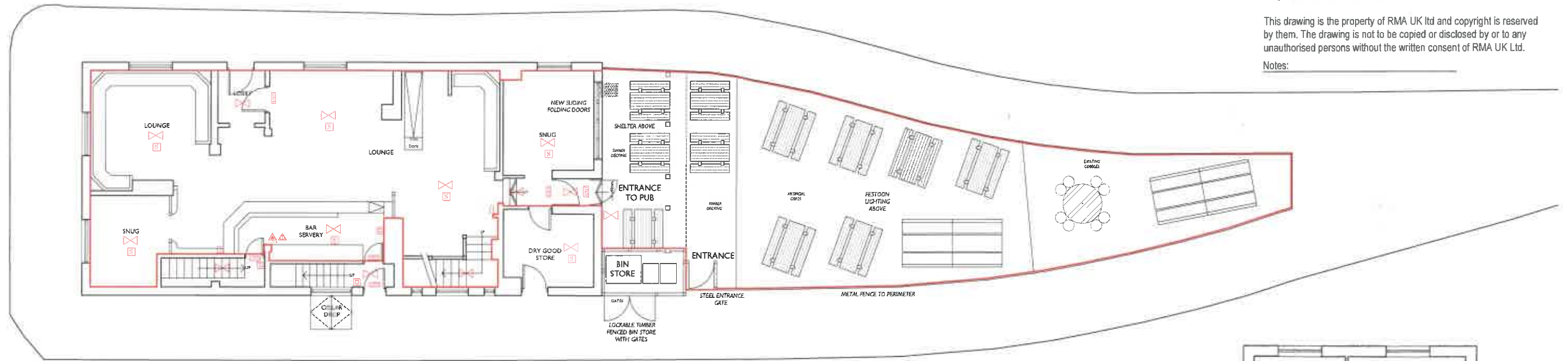


All site dimensions shall be verified by contractors on site prior to work commencing

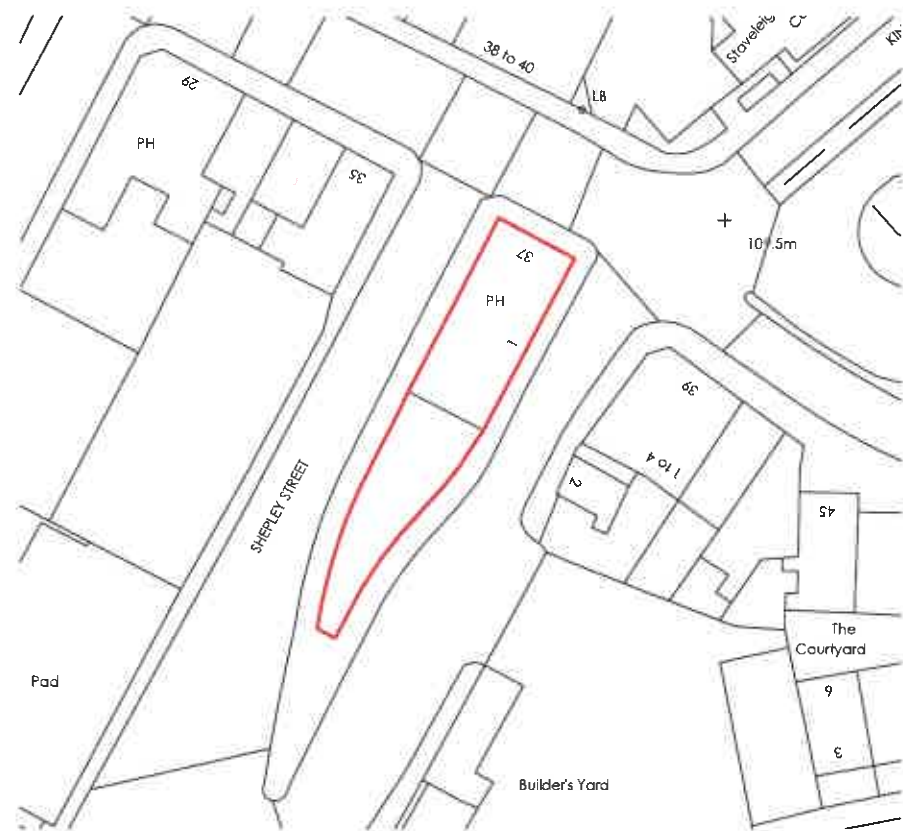
Do not scale from this drawing
Only work to written dimensions

This drawing is the property of RMA UK Ltd and copyright is reserved by them. The drawing is not to be copied or disclosed by or to any unauthorised persons without the written consent of RMA UK Ltd.

Notes:



PROPOSED GROUND FLOOR PLAN (1:100)



PROPOSED SITE PLAN (1:500)

LICENSABLE ACTIVITIES	
KEY TO LICENSING SYMBOLS (Note Existing fittings are marked 'EP')	
Emergency Lighting Luminaire	6L Wet Chemical (Fat Figher) Fire Extinguisher
Illuminated emergency exit sign mounted above door indicating escape route (pictorial on approach side)	Foam Fire Extinguisher
Illuminated emergency exit directional sign (pictorial on approach side), direction indicated	9L Water Fire Extinguisher
Illuminated emergency exit sign suspended above head height 90-deg. in escape route (pictorial on approach side)	6L Hydrospray Fire Extinguisher
Break Glass Fire Alarm Manual call point	Fire Blanket
Fire Alarm electronic sounder	Dry Powder Fire Extinguisher
Heat/Smoke Detector	2kg. or 5kg. Carbon Dioxide Fire Extinguisher
Fire Alarm Control Panel	9L F-Class Fire Extinguisher
Fire Alarm Zenon Beacon	Vision panel in door
30-minute fire resistant solid core door	escape non-emergency (push bars/peds) on doors
30-minute fire resistant solid core door with smoke seal	First Aid kit box
one-hour fire resistant solid core door with smoke seal	

THE CURRENT LOCATION OF FIRE SAFETY EQUIPMENT AND OTHER EQUIPMENT IS SHOWN. THESE MAY BE SUBJECT TO VARIATION / MOVEMENT IN THE FUTURE AS NECESSARY AND WHERE APPLICABLE CHANGE WILL BE DONE IN CONSULTATION WITH THE FIRE OFFICER.



PROPOSED FIRST FLOOR PLAN (1:100)

RED CROSS INDICATES EXISTING FIRE FIGHTING EQUIPMENT

LICENSING		Scale: 1:100 @A2
Project/Client: The White House, 1 Water St, Stalybridge SK15 2AG	Project No: 1915 Dwg No: 201 Rev:	Drawn By: AR Checked By: Date: OCT2019
Drawing: Proposed Licensing Plans		

rma
The Stables, Slaney Brook Farm, Norley, CV8 2RX, Tel: 01929 787875